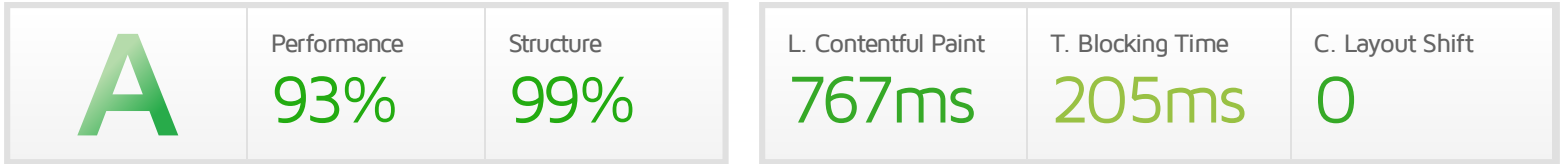


Performance Report for: <https://astephan.digital/>

Report generated: Wed, Feb 9, 2022 5:34 AM -0800
 Test Server Location: Vancouver, Canada
 Using: Chrome (Desktop) 90.0.4430.212, Lighthouse 8.3.0



Top Issues

| IMPACT | AUDIT | |
|---------|--------------------------------------|----------------------------------|
| Med-Low | Use a Content Delivery Network (CDN) | 10 resources found |
| Low | Avoid an excessive DOM size | 861 elements |
| Low | Avoid long main-thread tasks | 6 long tasks found |
| Low | Reduce JavaScript execution time | 488ms spent executing JavaScript |
| Low | Avoid enormous network payloads | Total size was 846KB |

Page Details



Total Page Size - 845KB



Total Page Requests - 54



■ HTML
 ■ JS
 ■ CSS
 ■ IMG
 ■ Video
 ■ Font
 ■ Other

How does this affect me?

Today's web user expects a fast and seamless website experience. Delivering that fast experience can result in increased visits, conversions and overall happiness.

As if you didn't need more incentive, **Google has announced that they are using page speed in their ranking algorithm.**

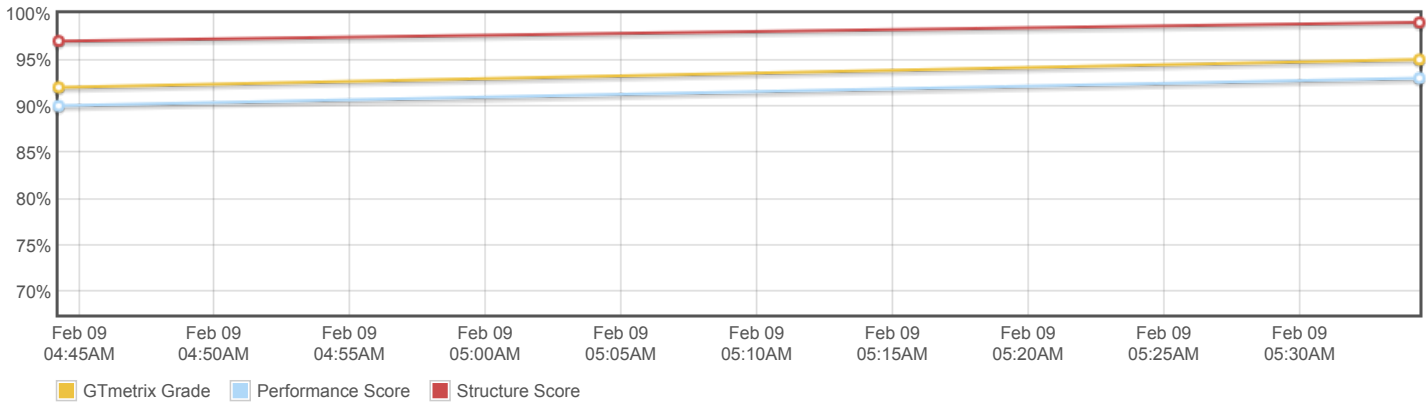
About GTmetrix

CARBON60
THE MANAGED CLOUD COMPANY

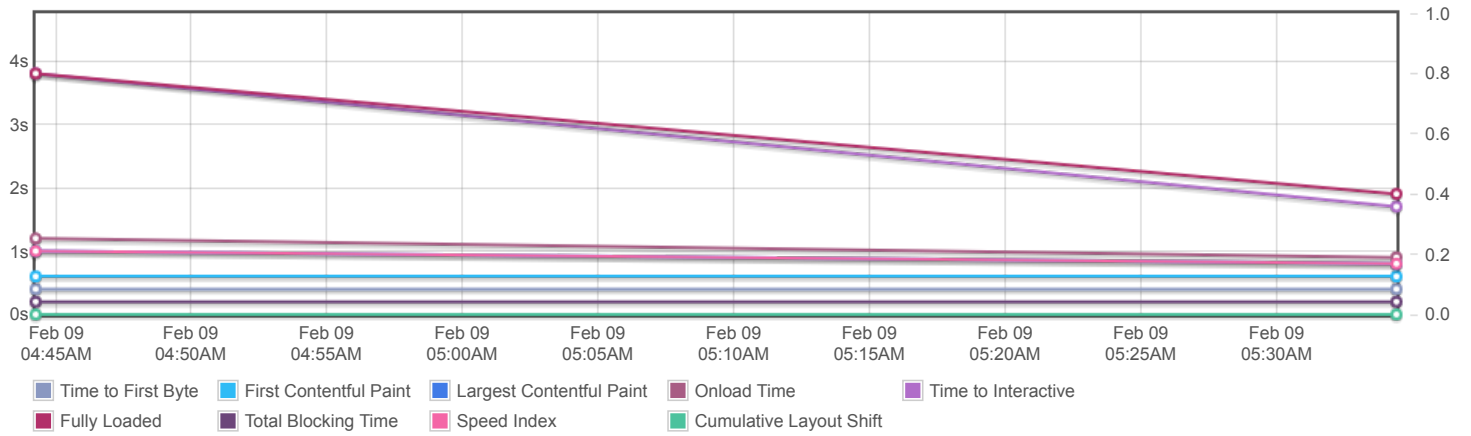
GTmetrix is developed by the good folks at Carbon60, a Canadian hosting company with over 26 years experience in web technology.

<https://carbon60.com/>

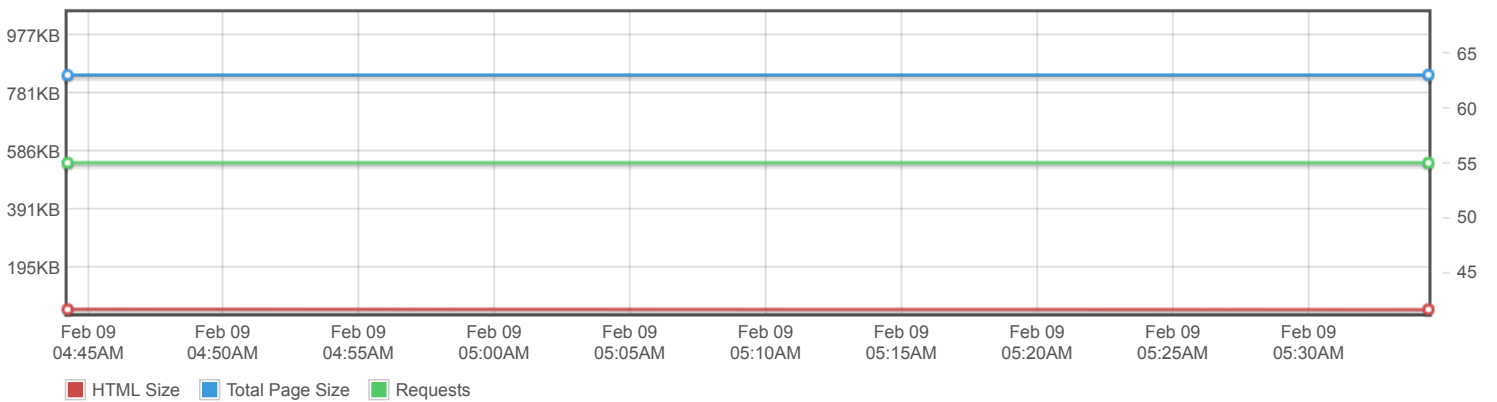
Page scores



Page metrics

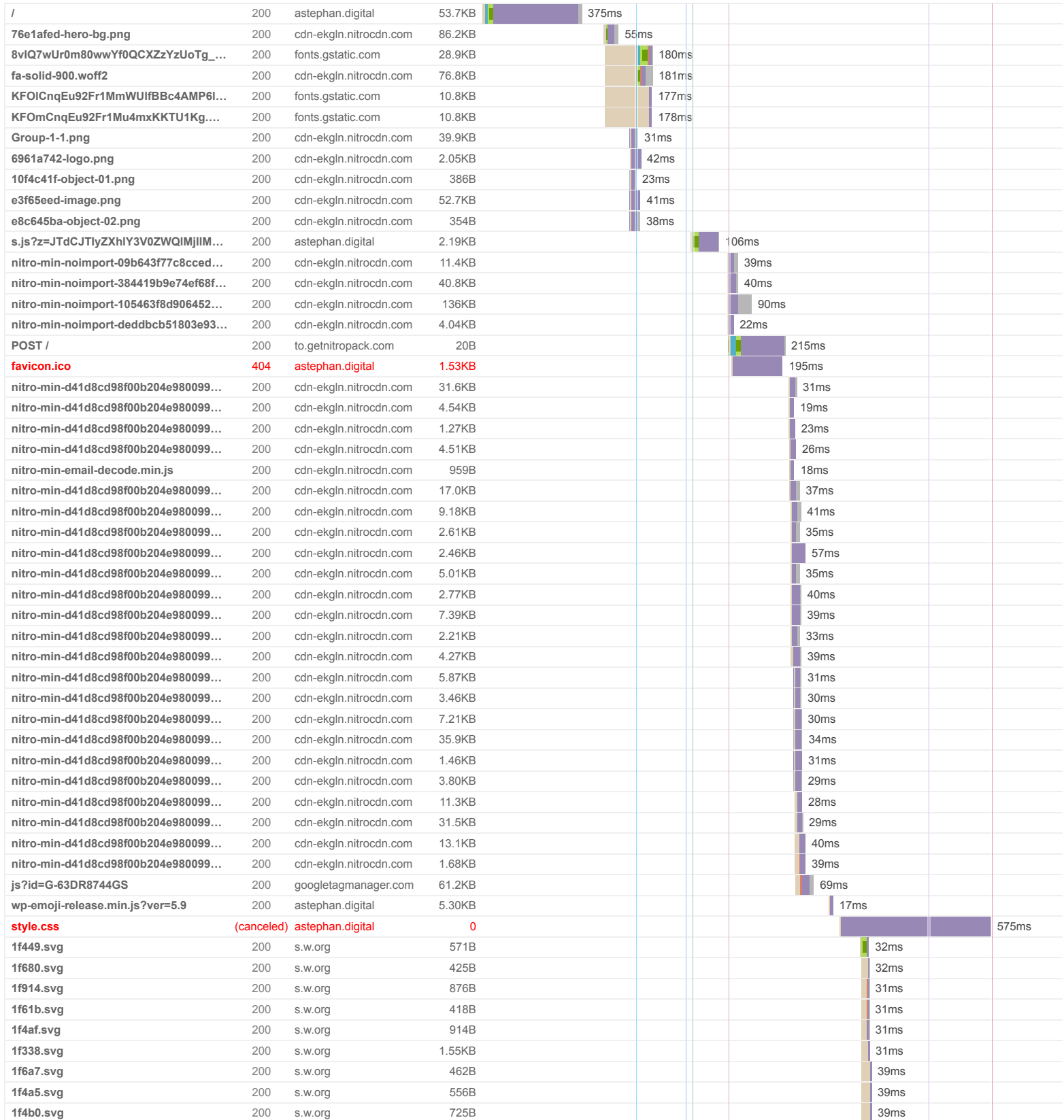


Page sizes and request counts

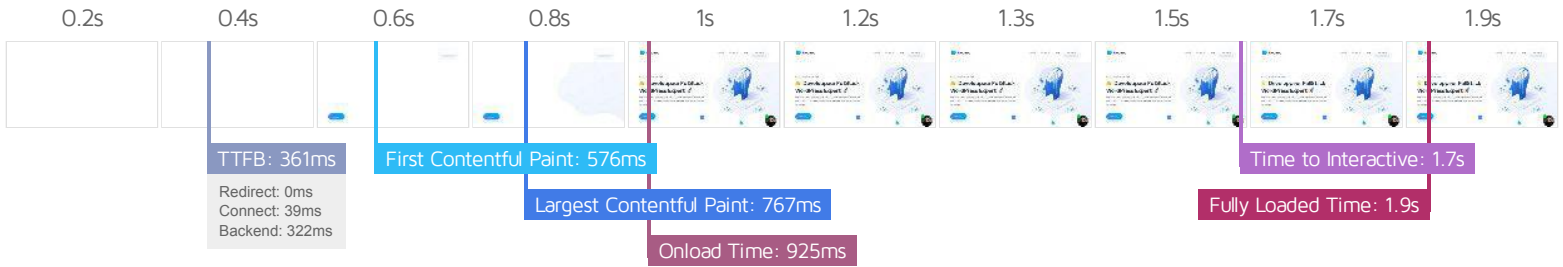


The waterfall chart displays the loading behaviour of your site in your selected browser. It can be used to discover simple issues such as 404's or more complex issues such as external resources blocking page rendering.

👉 Développeur Wordpress 🌐 - Alexis Stephan



| | | | | | | | | | | |
|--------------------|-----|------------------------------------|------|---|--|--|--|------|--|--|
| 2b50.svg | 200 | s.w.org | 406B | | | | | 38ms | | |
| 55 Requests | | 843KB (3.09MB Uncompressed) | | Fully Loaded 1.9s (Onload 925ms) | | | | | | |



Performance Metrics

| | | | |
|--|--|---|---|
| <p>First Contentful Paint</p> <p>How quickly content like text or images are painted onto your page. A good user experience is 0.9s or less.</p> | <p>Good - Nothing to do here</p> <p>576ms</p> | <p>Time to Interactive</p> <p>How long it takes for your page to become fully interactive. A good user experience is 2.5s or less.</p> | <p>Good - Nothing to do here</p> <p>1.7s</p> |
| <p>Speed Index</p> <p>How quickly the contents of your page are visibly populated. A good user experience is 1.3s or less.</p> | <p>Good - Nothing to do here</p> <p>804ms</p> | <p>Total Blocking Time</p> <p>How much time is blocked by scripts during your page loading process. A good user experience is 150ms or less.</p> | <p>OK, but consider improvement</p> <p>205ms</p> |
| <p>Largest Contentful Paint</p> <p>How long it takes for the largest element of content (e.g. a hero image) to be painted on your page. A good user experience is 1.2s or less.</p> | <p>Good - Nothing to do here</p> <p>767ms</p> | <p>Cumulative Layout Shift</p> <p>How much your page's layout shifts as it loads. A good user experience is a score of 0.1 or less.</p> | <p>Good - Nothing to do here</p> <p>0</p> |

Browser Timings

| | | | | | |
|------------|-------|-------------|-------|--------------|-------|
| Redirect | 0ms | Connect | 39ms | Backend | 322ms |
| TTFB | 361ms | First Paint | 576ms | DOM Int. | 789ms |
| DOM Loaded | 790ms | Onload | 925ms | Fully Loaded | 1.9s |

| IMPACT | AUDIT | |
|---------|---|----------------------------------|
| Med-Low | Use a Content Delivery Network (CDN) | 10 resources found |
| Low | Avoid an excessive DOM size | 861 elements |
| Low | Avoid long main-thread tasks | 6 long tasks found |
| Low | Reduce JavaScript execution time | 488ms spent executing JavaScript |
| Low | Avoid enormous network payloads | Total size was 846KB |
| Low | Properly size images | Potential savings of 75.5KB |
| Low | Serve static assets with an efficient cache policy | Potential savings of 2.64KB |
| Low | Ensure text remains visible during webfont load | 3 fonts found |
| Low | Reduce unused CSS | Potential savings of 179KB |
| Low | Reduce initial server response time | Root document took 321ms |
| Low | Avoid serving legacy JavaScript to modern browsers | Potential savings of 44B |
| Low | Avoid non-composited animations | 3 animated elements found |
| Low | Minify JavaScript | Potential savings of 2.84KB |
| Low | Avoid chaining critical requests | 9 chains found |
| Low | Reduce unused JavaScript | Potential savings of 58.0KB |
| N/A | Largest Contentful Paint element | 1 element found |
| N/A | Minimize main-thread work | Main-thread busy for 1.9s |
| N/A | Reduce the impact of third-party code | Total size was 120KB |
| N/A | User Timing marks and measures | |